

BELIMO LF230 / LF24

Electric actuators

Features

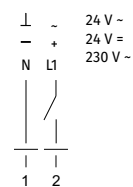
- For controlling air dampers with cross section up to 0.8 m² installed in various ventilation and air conditioning systems and performing protection functions.



Design

- The electric actuator is provided with a 4 Nm actuating torque and an overload protection.
- The actuator is installed directly on the air damper shaft.
- The actuator is equipped with a return spring, which moves the damper to its operating position while tensioning the return spring at the same time. In case of power supply cut-off, the damper moves back to its safe position by the spring energy.
- The angle of rotation is adjusted by mechanical end stops.

Wiring diagram



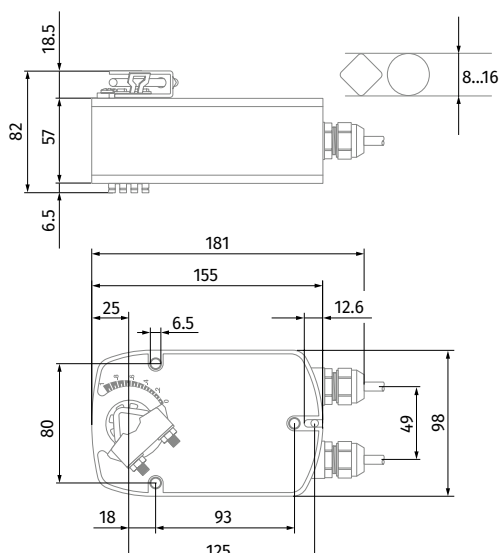
LF24, LF230

Warning!
For LF24: connection via a power transformer

For LF230: after disconnection from power supply the contacts opening gap must be within 3 mm

Several electric actuators may be parallel connected with respect to the power

Overall dimensions [mm]



Technical data

Parameters	LF24	LF230
Voltage	24 V ~ 50 (60) Hz, 24 V=	230 V ~ 50 (60) Hz
Nominal voltage range [V]	19.2...28.8 ~ 21.6...28.8 V=	198...264 ~
Rated power [VA]	7 (max. I 5.8 A at t = 5 ms)	7 (max. I 150 mA at t = 10 ms)
Power consumption in operation / at rest [W]	5 / 2.5	5 / 3
Connecting cable	1 m long, 2 x 0.75 mm ²	
Direction of rotation	determined by L/R positioning	
Torque (motor / spring) [Nm]	4 (at nominal voltage) / 4	
Angle of rotation	max. 95°, adjustable 37...100 % with a mechanical end stop	
Swing time (motor / spring) [sec]	40...75 (0...4 Nm) / ~ 20 at -20...50 °C	
Service life	60 000 switching operations	
Ingress protection rating	IP54 (installation with cable downwards)	
Electrical protection class	III low voltage II totally insulated	III low voltage II totally insulated
Operation temperature [°C]	-30...+50	-30...+50
Storage temperature [°C]	-40...+80	-40...+80
Ambient humidity	95 %, no condensation	
Noise level (motor/ spring) [dBA]	50 / ~ 62	50 / ~ 62
Maintenance	not required	
Weight [kg]	1.4	1.4